

12-BAR BLUES

3RDS & 7THS VOICINGS

System 1 (Measures 1-4):
Trebble clef, 4/4 time signature.
Chords: C⁷, F⁷, C⁷, C⁷.
Bass line: C^{b7} (C2, E2, G2), F^{b7} (B1, D2, F2), C^{b7} (C2, E2, G2), C^{b7} (C2, E2, G2).

System 2 (Measures 5-8):
Trebble clef, 4/4 time signature.
Chords: F⁷, F⁷, C⁷, C⁷.
Bass line: F^{b7} (B1, D2, F2), F^{b7} (B1, D2, F2), C^{b7} (C2, E2, G2), C^{b7} (C2, E2, G2).
Fingering: 5 (on the treble clef staff).

System 3 (Measures 9-12):
Trebble clef, 4/4 time signature.
Chords: G⁷, F⁷, C⁷, G⁷ (C⁷ FOR FINAL CHORUS).
Bass line: G^{b7} (F2, A2, C3), F^{b7} (B1, D2, F2), C^{b7} (C2, E2, G2), G^{b7} (F2, A2, C3).
Fingering: 9 (on the treble clef staff).

NancyDeHaven.com

© 2015 Nancy D. Hall

Permission is granted to share in any medium or format for non-commercial purposes only, provided the entire page is distributed as is.

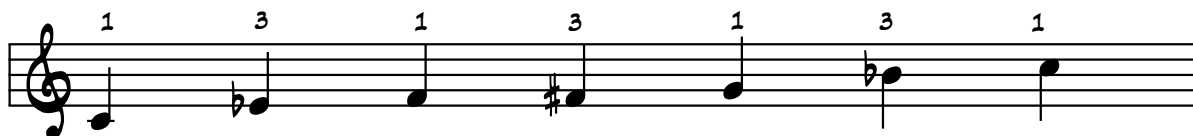
12-BAR BLUES

NOTE: PLAY ONE OCTAVE HIGHER THAN WRITTEN.

BLUES SCALE IN SEGMENTS



THE C BLUES SCALE (COMPLETE)



THE FOLLOWING IDEAS ARE SIMPLY TO GIVE YOU IDEAS OF WHAT CAN BE DONE. ITS FAR BETTER THAT AT FIRST YOU SIMPLY PLAY WHATEVER COMES INTO YOUR HEAD, AND IF NOTHING COMES INTO YOUR HEAD, THEN JUST START PRESSING SOME OF THE KEYS FOR THE SEGMENT AND ENJOY!

SEGMENT #1 IDEAS



SEGMENT #2 IDEAS



SEGMENT #3 IDEAS



IDEAS USING THE ENTIRE SCALE

